

Pricing

- **Pricing Option**
 - Charging discount rates even if rent time ends after discount period
 - Charging discount rates even if rent time starts before discounted period
 - Charging only one unified rate for rent time
 - Charging independently from previous rate

- **Charging Rates**
 - Configure price settings
 - Add, edit, or delete charging rates
 - Click *Add* and enter rate name, price settings, etc. (1)
 - If *Periodic Rate* is enabled, discount rates can be set to take effect at specific hours of the day

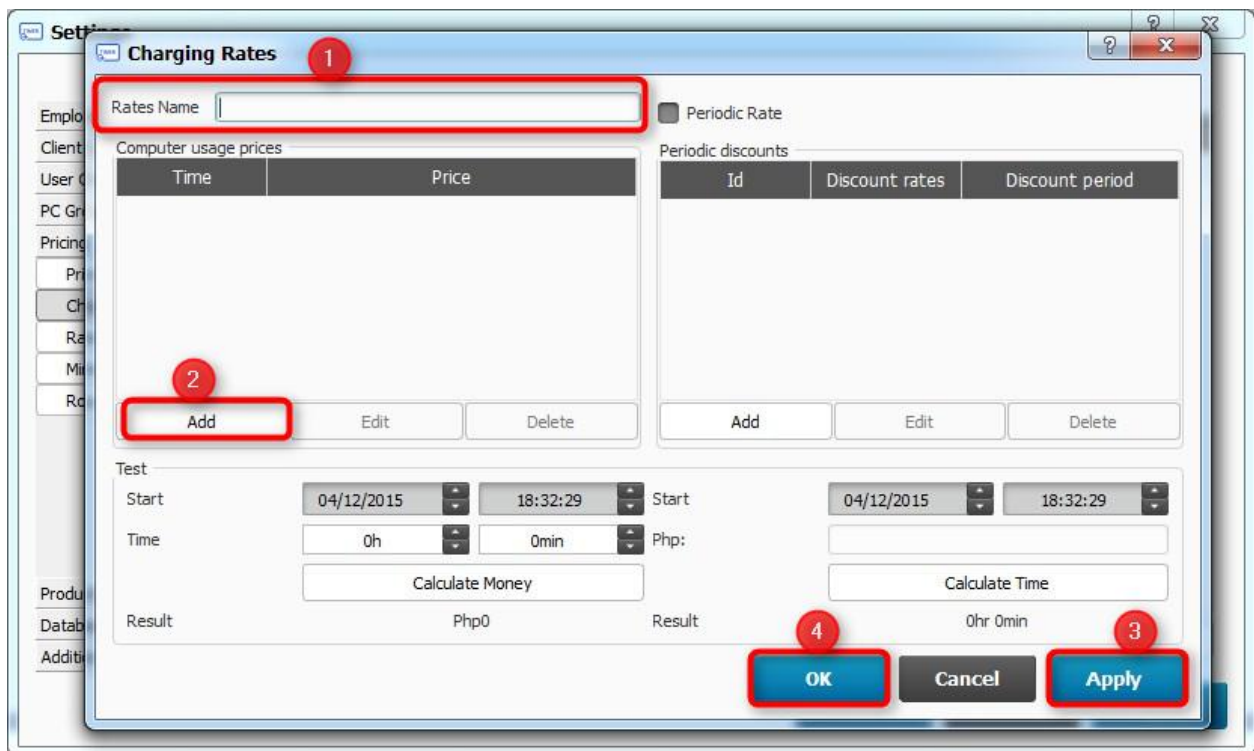
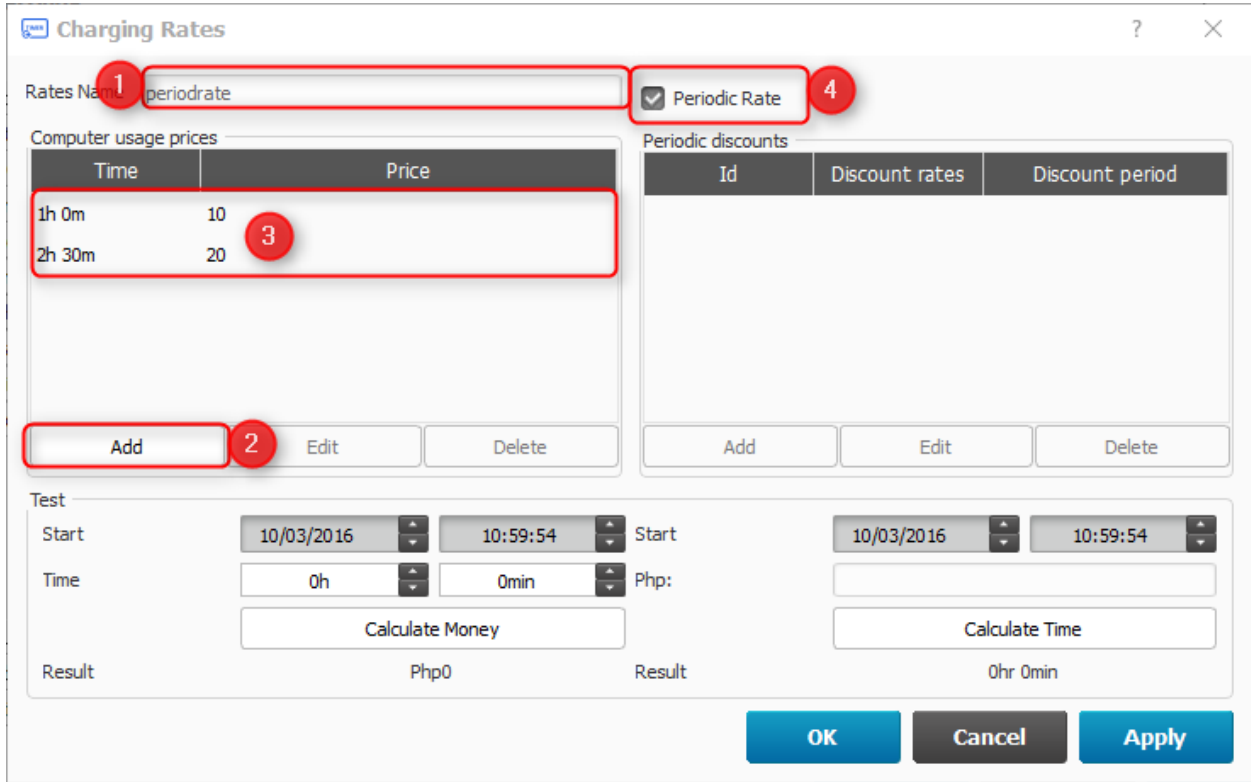


Figure 1. Charging rates

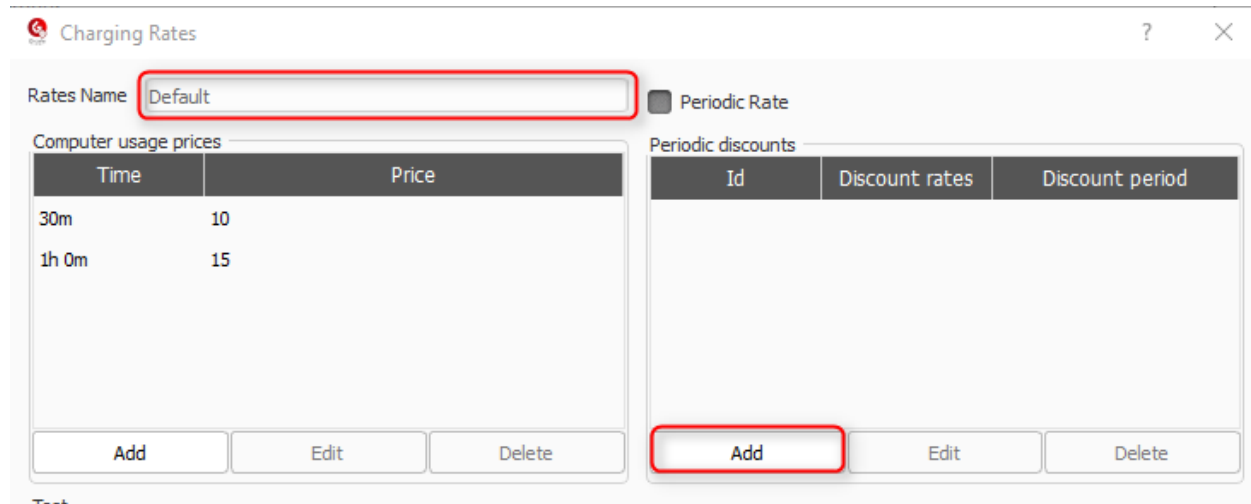
How to setup Periodic Rate/Discount Rate?

Create another charging rate, put desired rate/price settings then tick “Periodic Rate” to use it as discount rate/s.



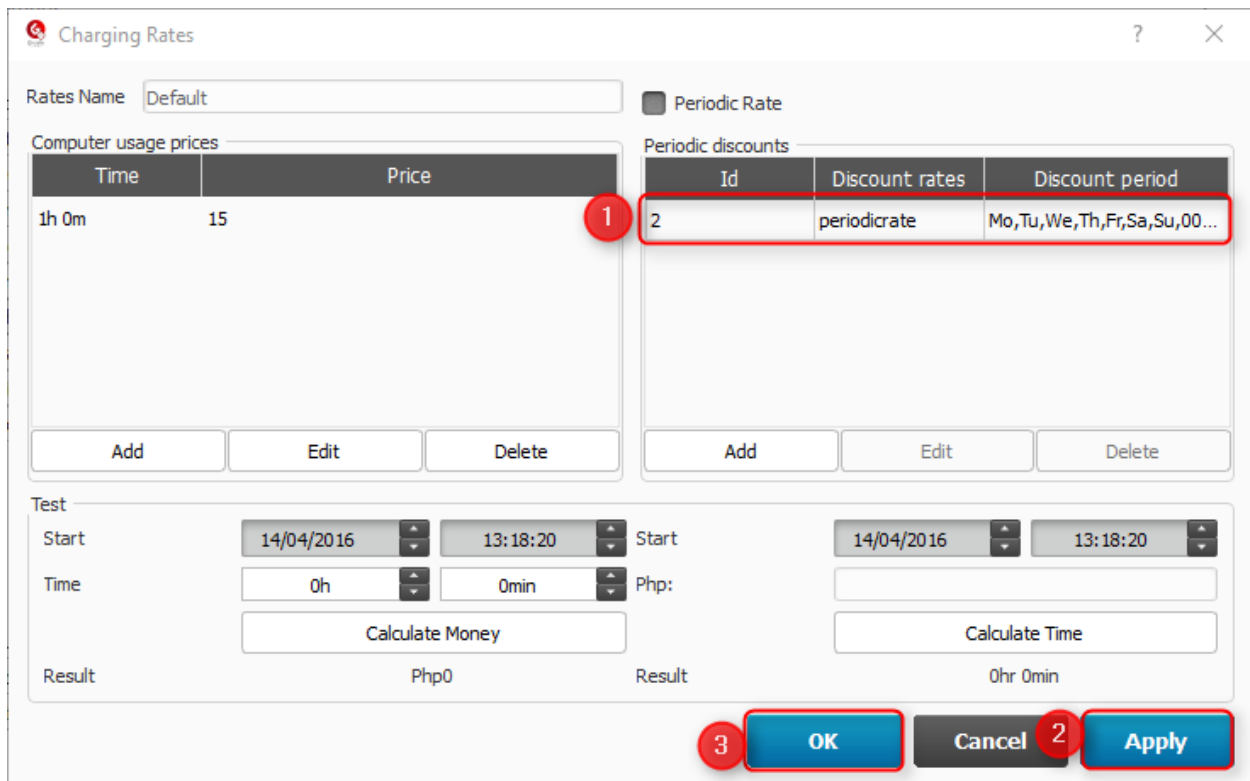
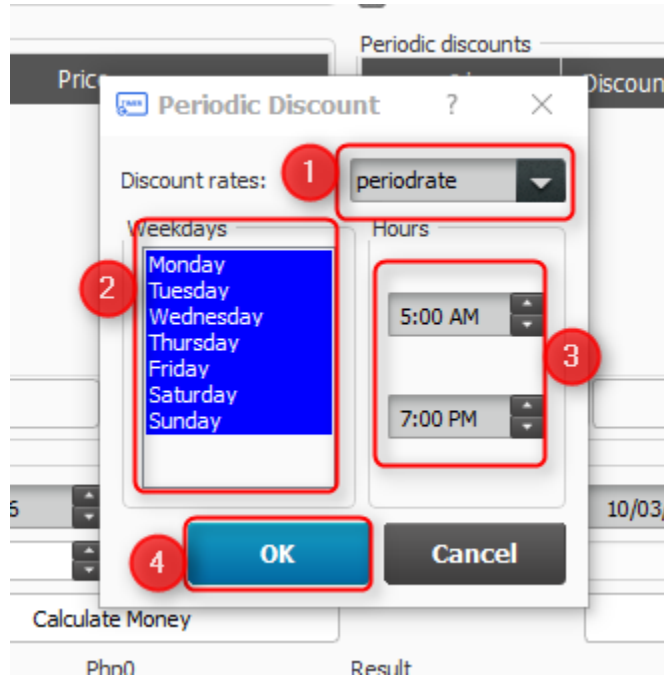
Once the charging rate with ticked periodic rate is done, edit the default charging rate used. Click add in the right side to add a discount period.

Rates	Type
Default	Standard
Member	Standard
Promo	Periodic



G-CAFE TIMER USER MANUAL FOR PRICING

Select discount rate/s, select the day and choose a time when the discount period should apply. Then click "OK".



Discount rate added. Click "Apply" and then click "OK".

- **Rate Assignment**
 - Adjust the default charging rate for each group

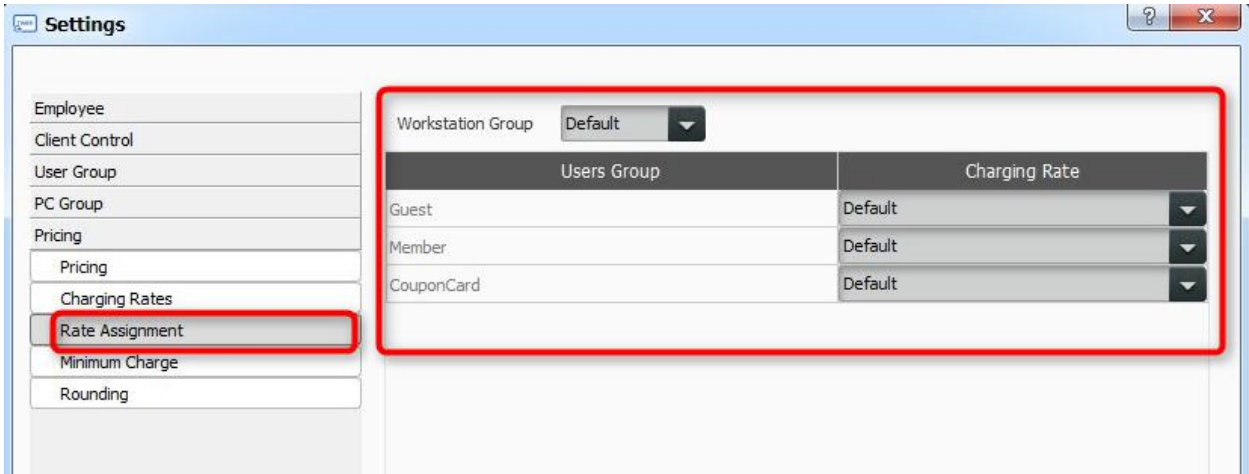


Figure 2. Rate assignment dialog

- **Minimum Charge**
 - Set minimum charge (initial rate) for each user group
 - Set lowest charge for time accounts

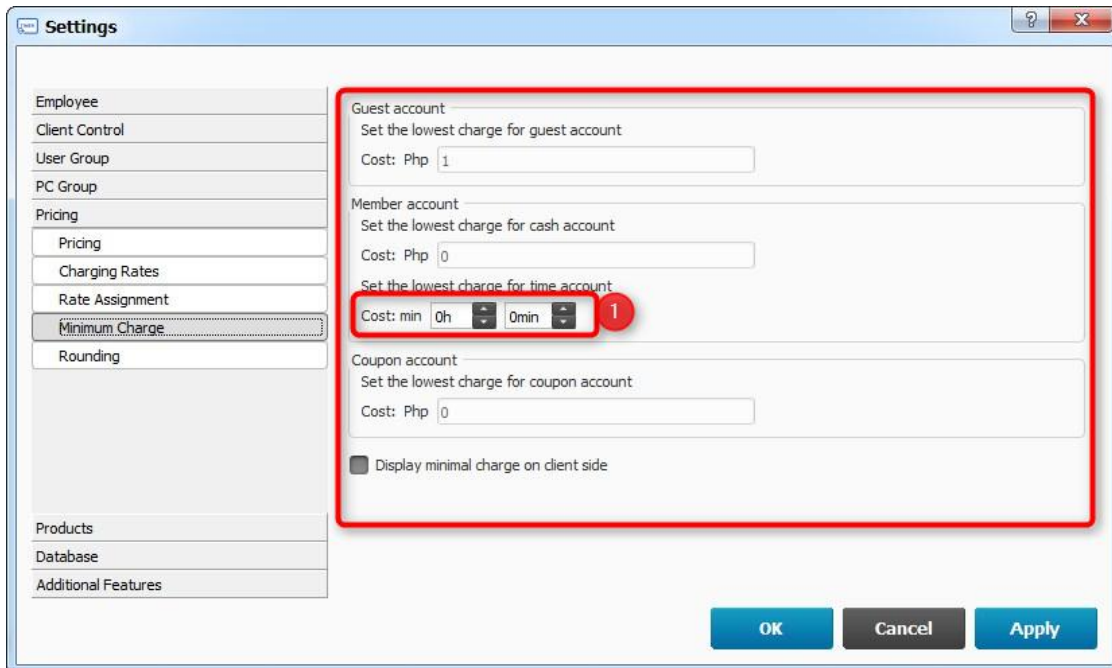


Figure 3. Minimum charge

- **Rounding**
 - Adjust how charging is rounded off
 - Options: *Average Rounding*, *Ceiling Rounding* and *No Rounding*

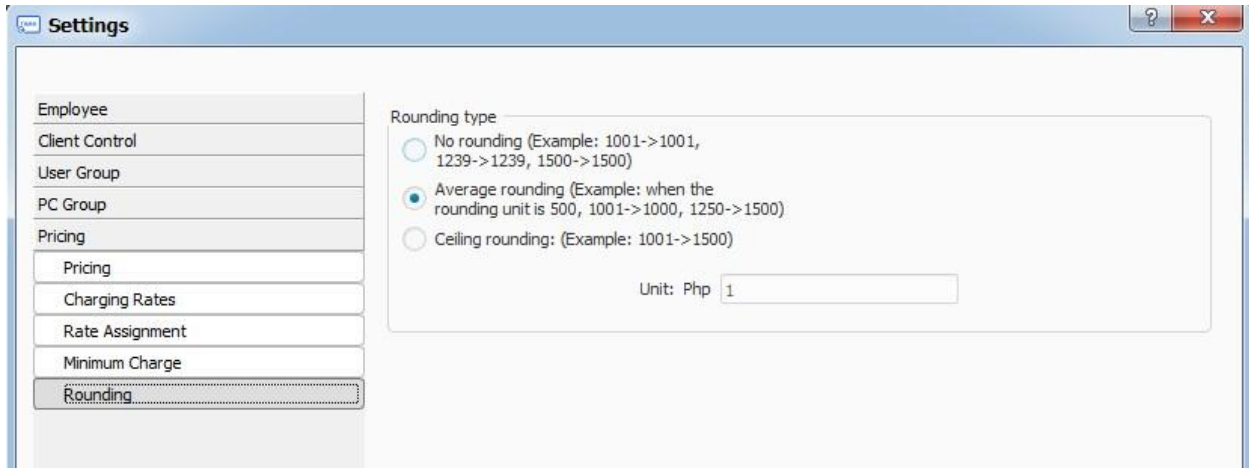


Figure 4. Rounding settings